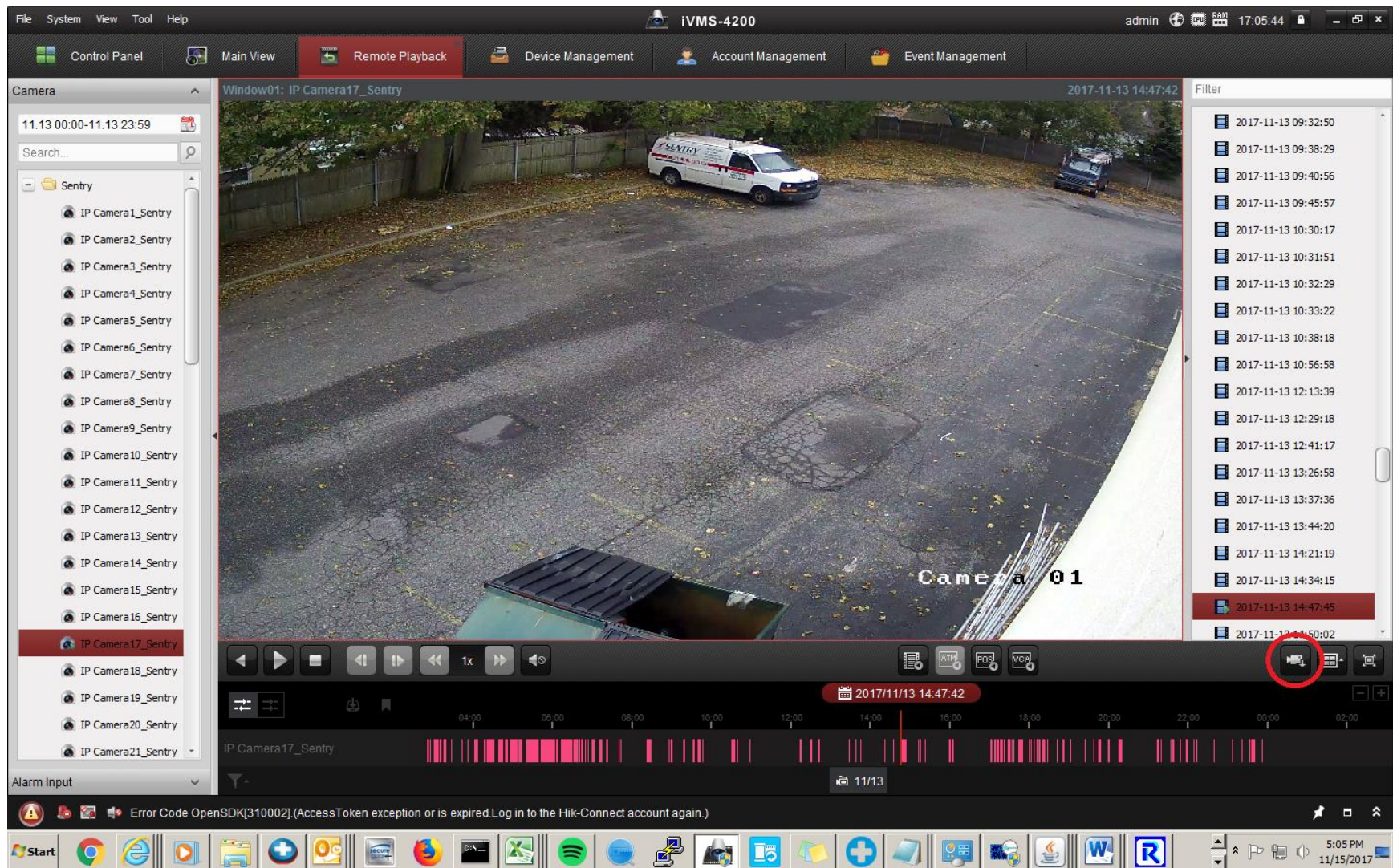
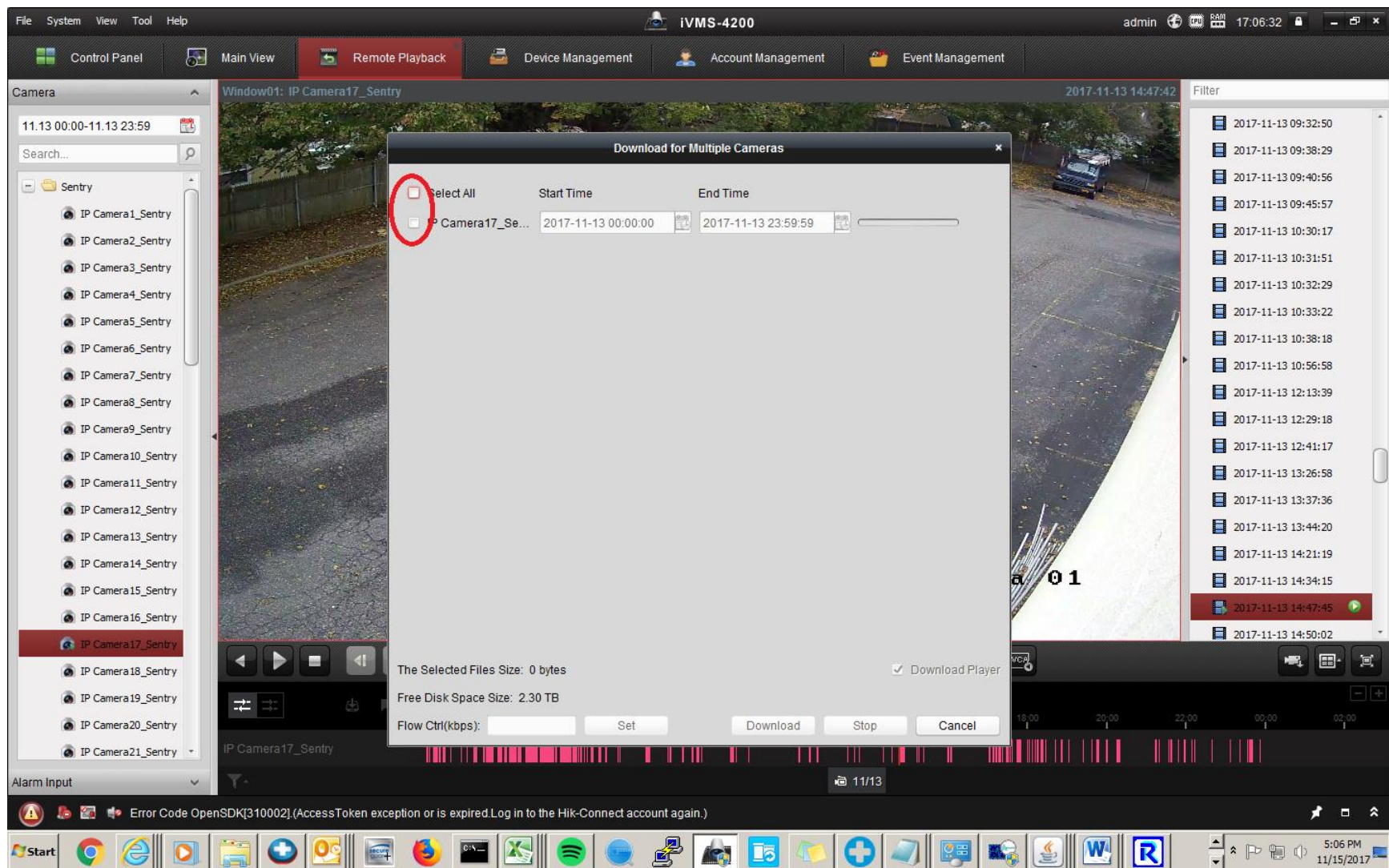


**Saving Video on the PC using the IVMS4200 program**



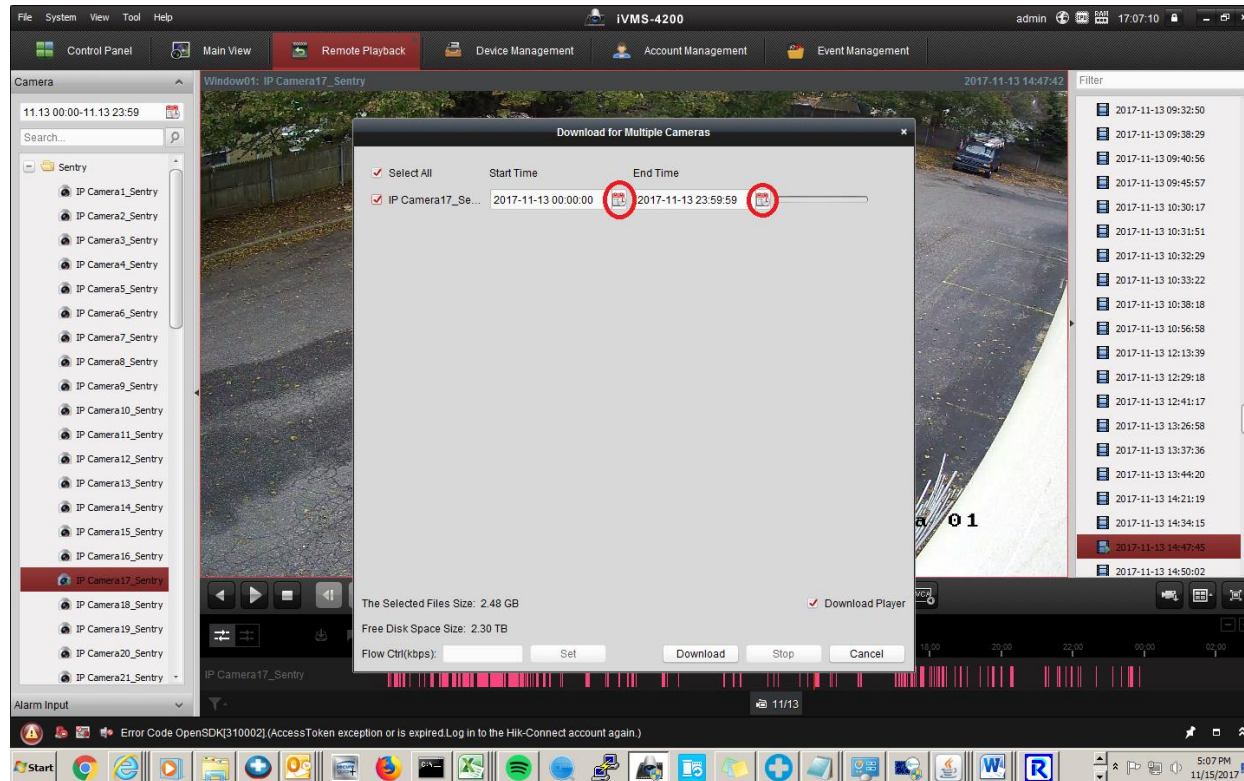
1) Bring up the playback from the camera you want to save a clip from and click on the button circled in red (if you're not familiar with how to do a regular playback please refer to the section immediately before this one titled "Playing Back Video on the PC Using the iVMS4200 Client").



2) Put a check mark next to the camera you want to save video from. If you are playing back multiple cameras at once you will see more than one camera in the list (if you are unfamiliar with how to playback multiple cameras simultaneously please refer to the



section immediately before this one titled “Playing Back Video on the PC Using the IVMS4200 Client”, specifically step 6). Put a check mark next to each camera you want to save a clip from.



3) Above you'll see two red and white calendars circled in red. The one in the start time column allows you to select a start time and date for your clip and the one on the right allows you to select an end time and date for it.

Download for Multiple Cameras

☒ Select All

☒ IP Camera17\_Se...

Start Time

2017-11-13 00:00:00

2017-11-13 23:59:59

2017-11-13 00:00:00

OK

End Time

2017-11-13 23:59:59

November

2017

S	M	T	W	T	F	S
29	30	31	1	2	3	4
5	6	7	8	9	10	11
12	13	14	15	16	17	18
19	20	21	22	23	24	25
26	27	28	29	30	1	2
3	4	5	6	7	8	9

Time:

00:00:00

OK

Hours

Minutes

Seconds

The Selected Files Size: 2.48 GB

☒ Download Player

Free Disk Space Size: 2.30 TB

Flow Ctrl(kbps):

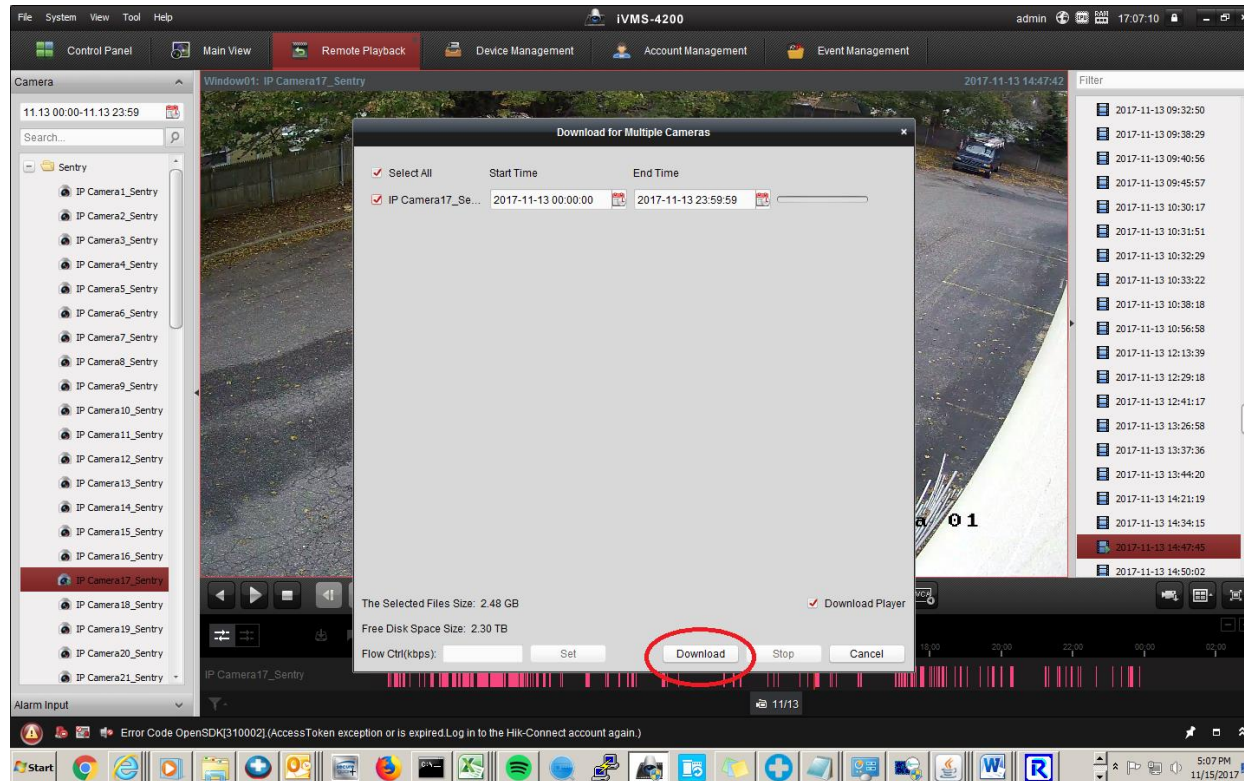
Set

Download

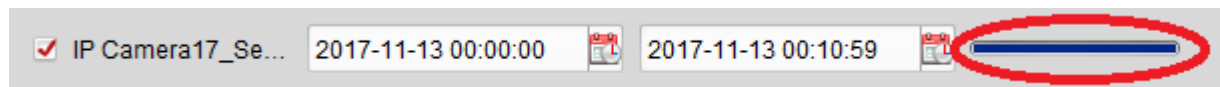
Stop

Cancel

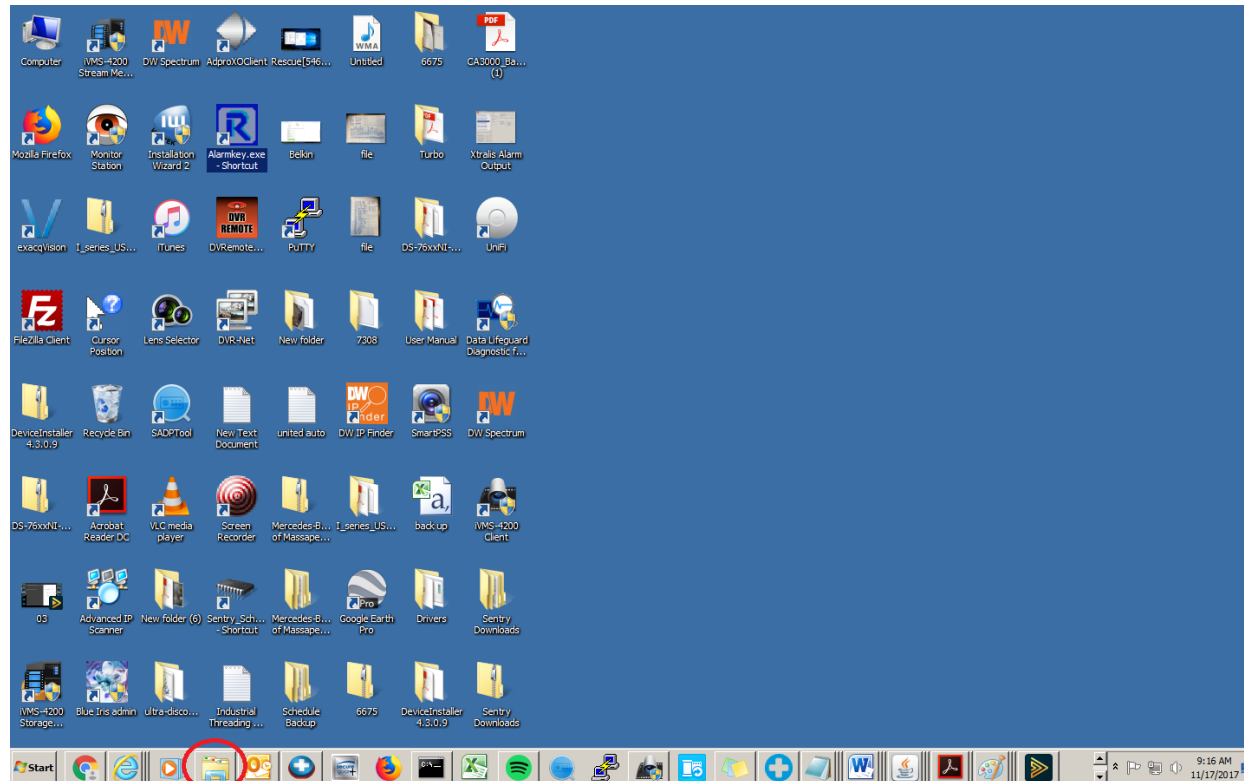
- 4) You can delete each pair of zeros (labeled Hours, Minutes and Seconds) and enter in a specific start time. Repeat this process for the second red and white calendar in the “End Time” column but enter the time the clip should end in this second calendar.



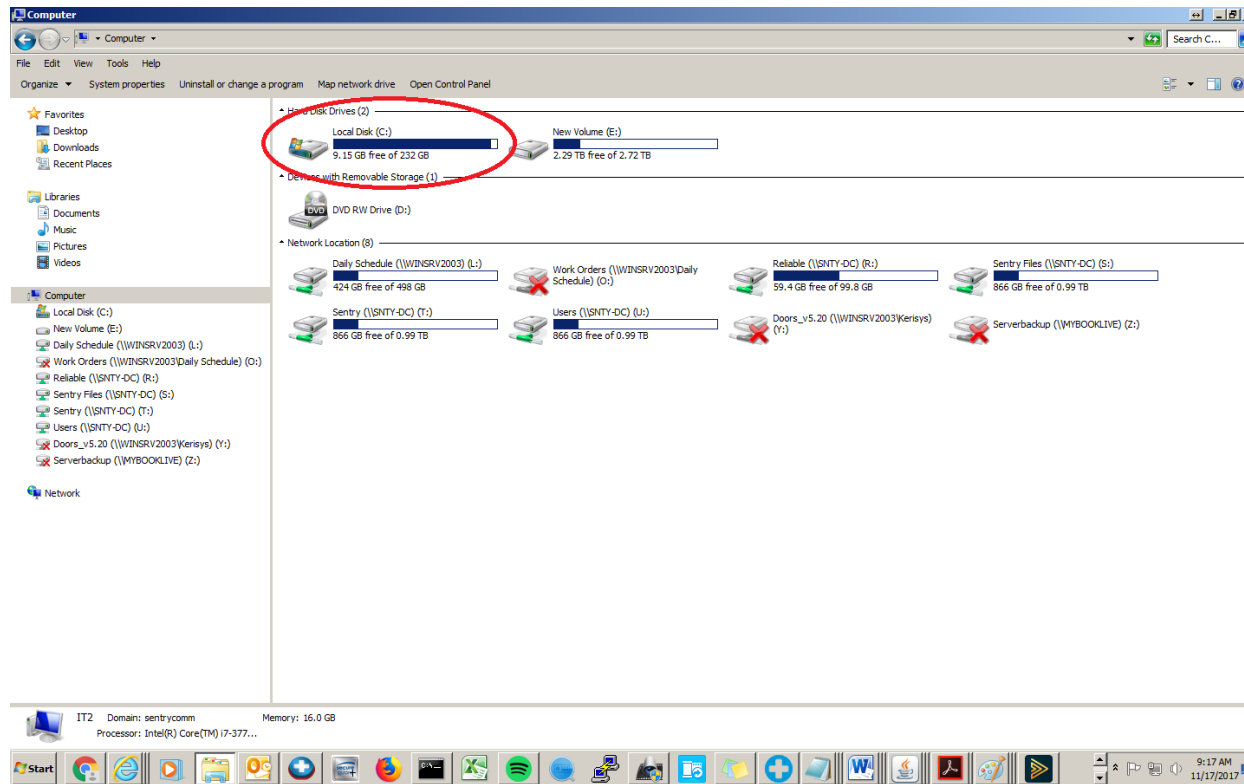
- 5) Once your desired start and end times/dates are selected hit the Download button circled in Red.



6) Take a look at the bar circled in red. You should see it progressively filling, when the entire bar is colored blue you know your clip is done saving. By default the saving path for video is “C:\iVMS-4200\video”. If you are unsure what that means please refer to steps 7 - otherwise you may skip these steps.

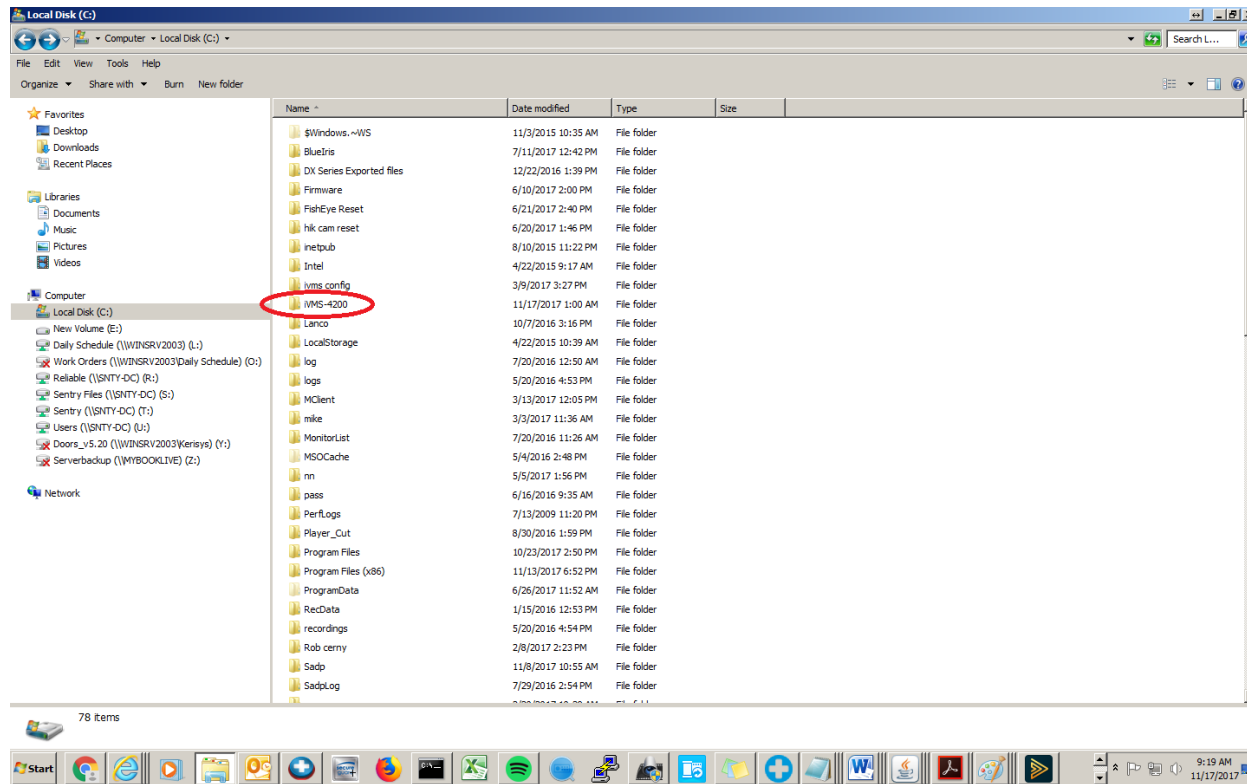


7) Open file explorer. You can do this by left clicking on the icon circled in red at the bottom.

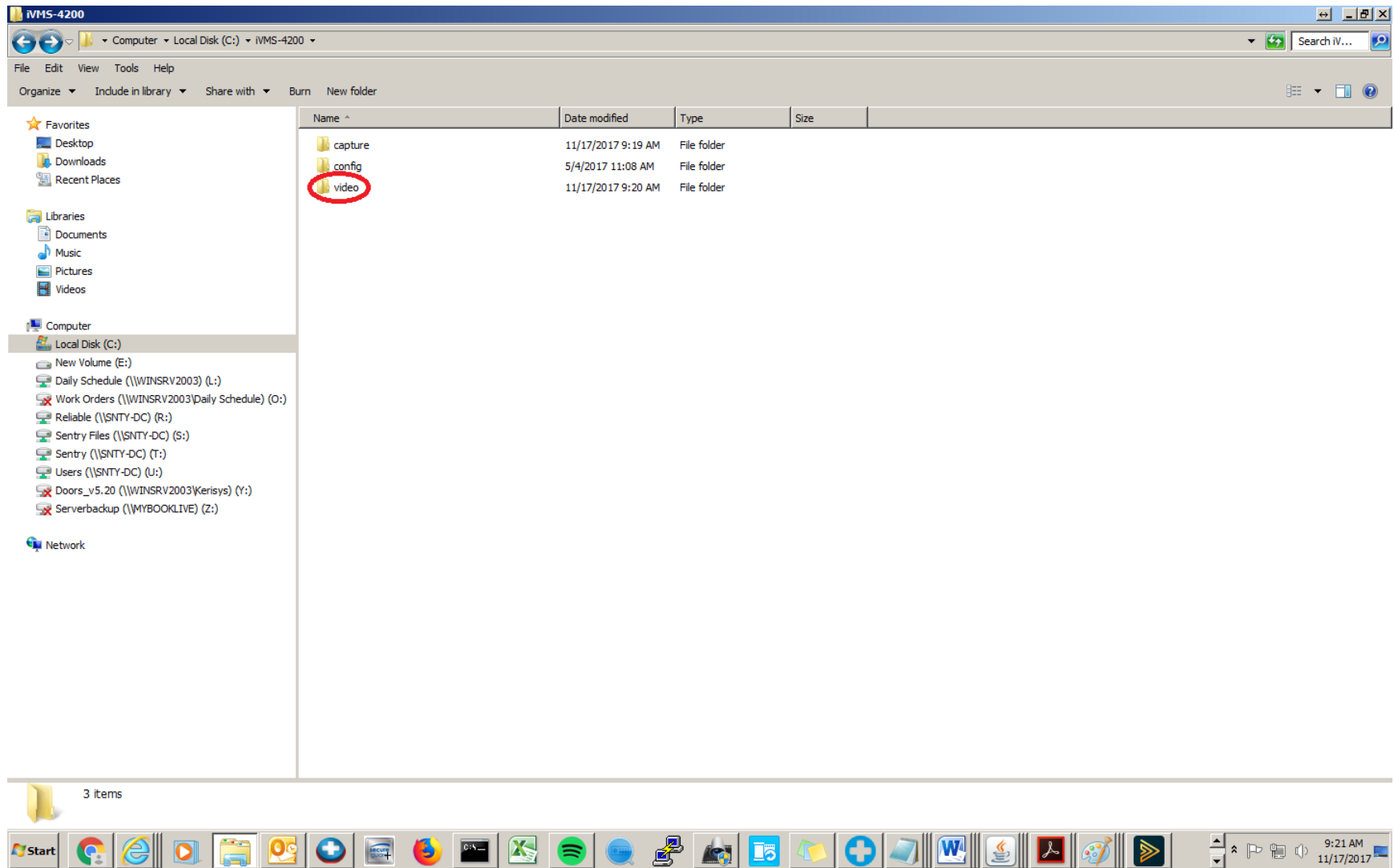


8) Double left click on your Local Disk C (If you don't see "Local Disk C" you may see something labeled "OS", if you do then just double left click on that instead).

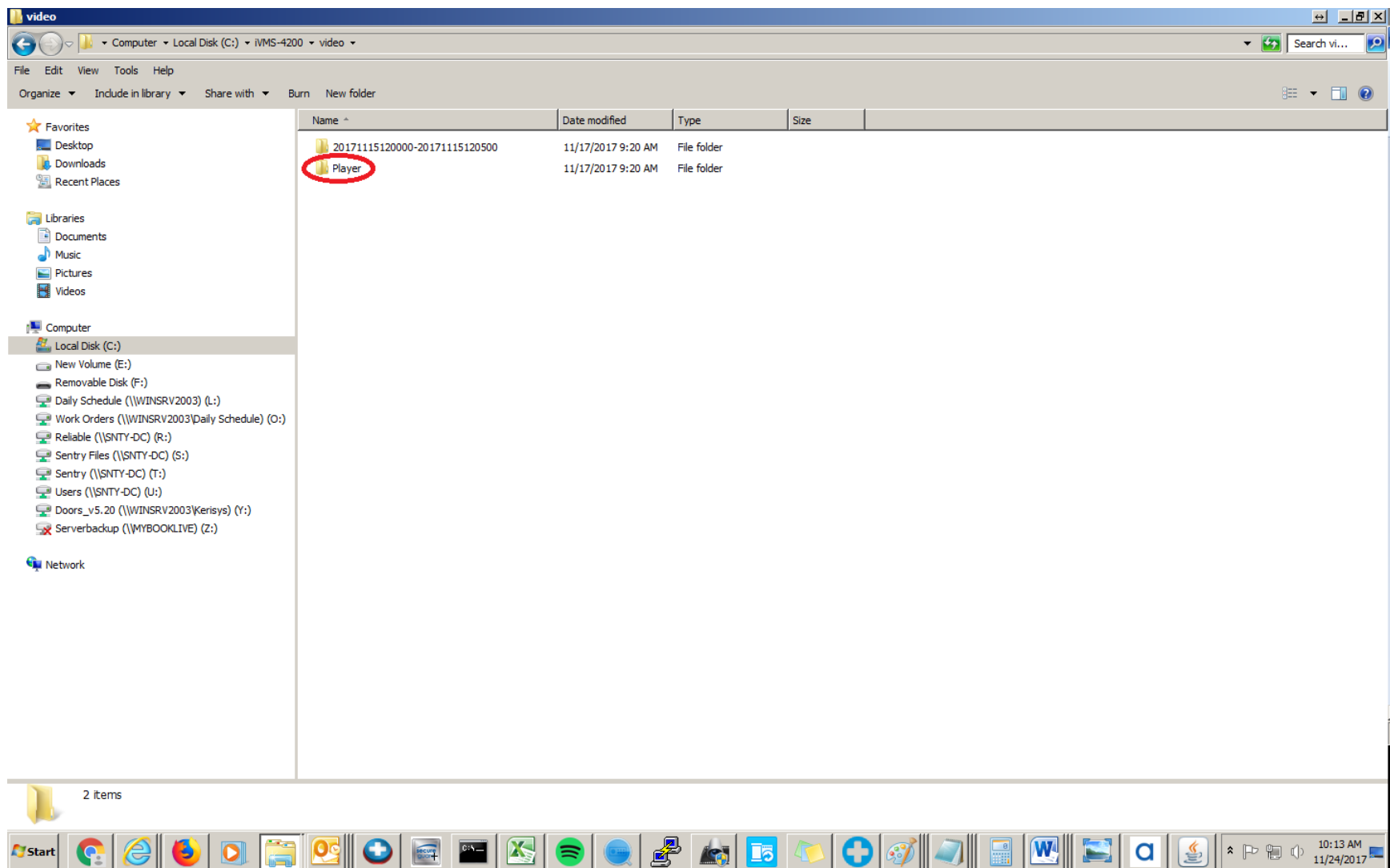




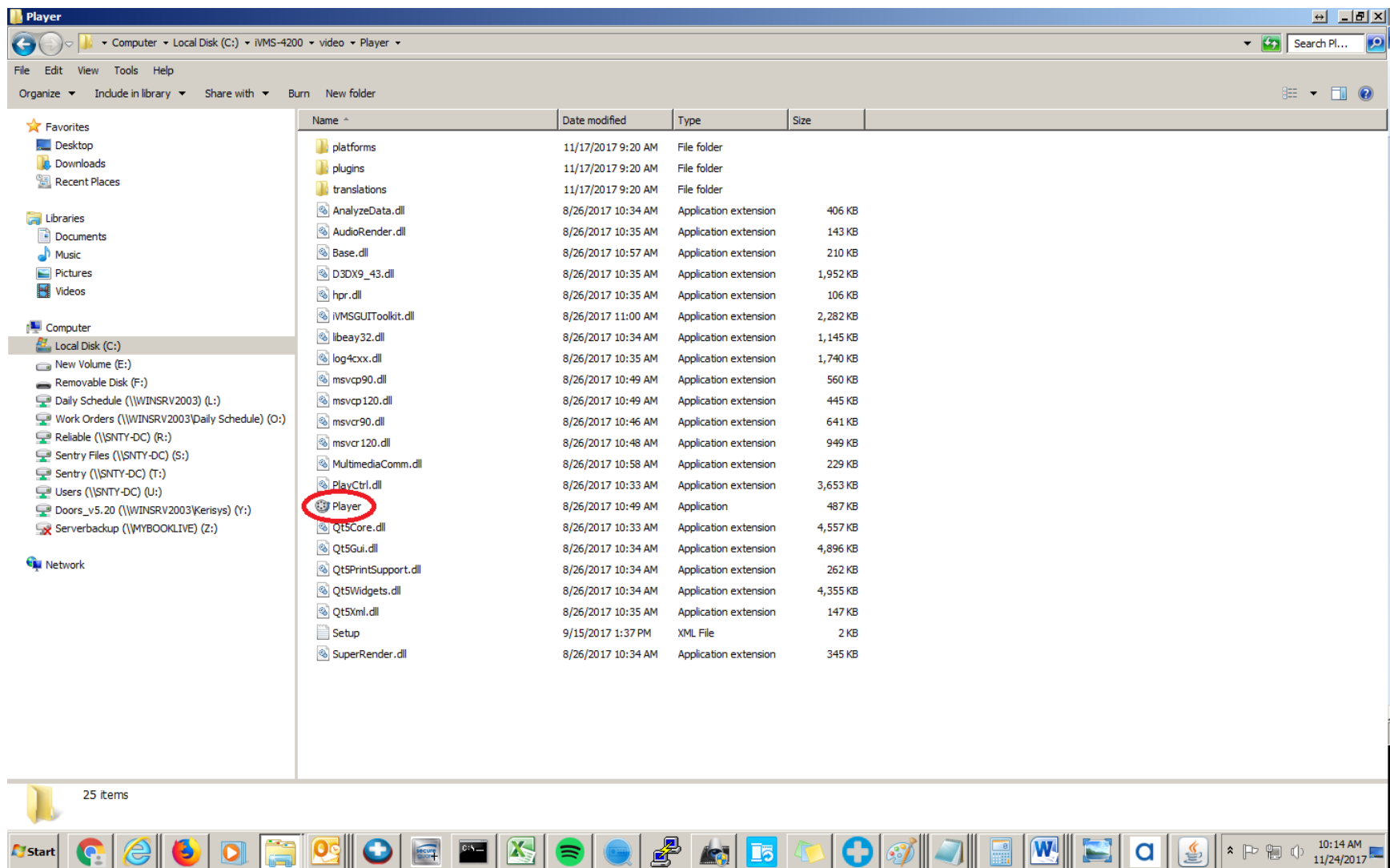
9) Double left click on the iVMS-4200 folder.



10) Double Left Click on video

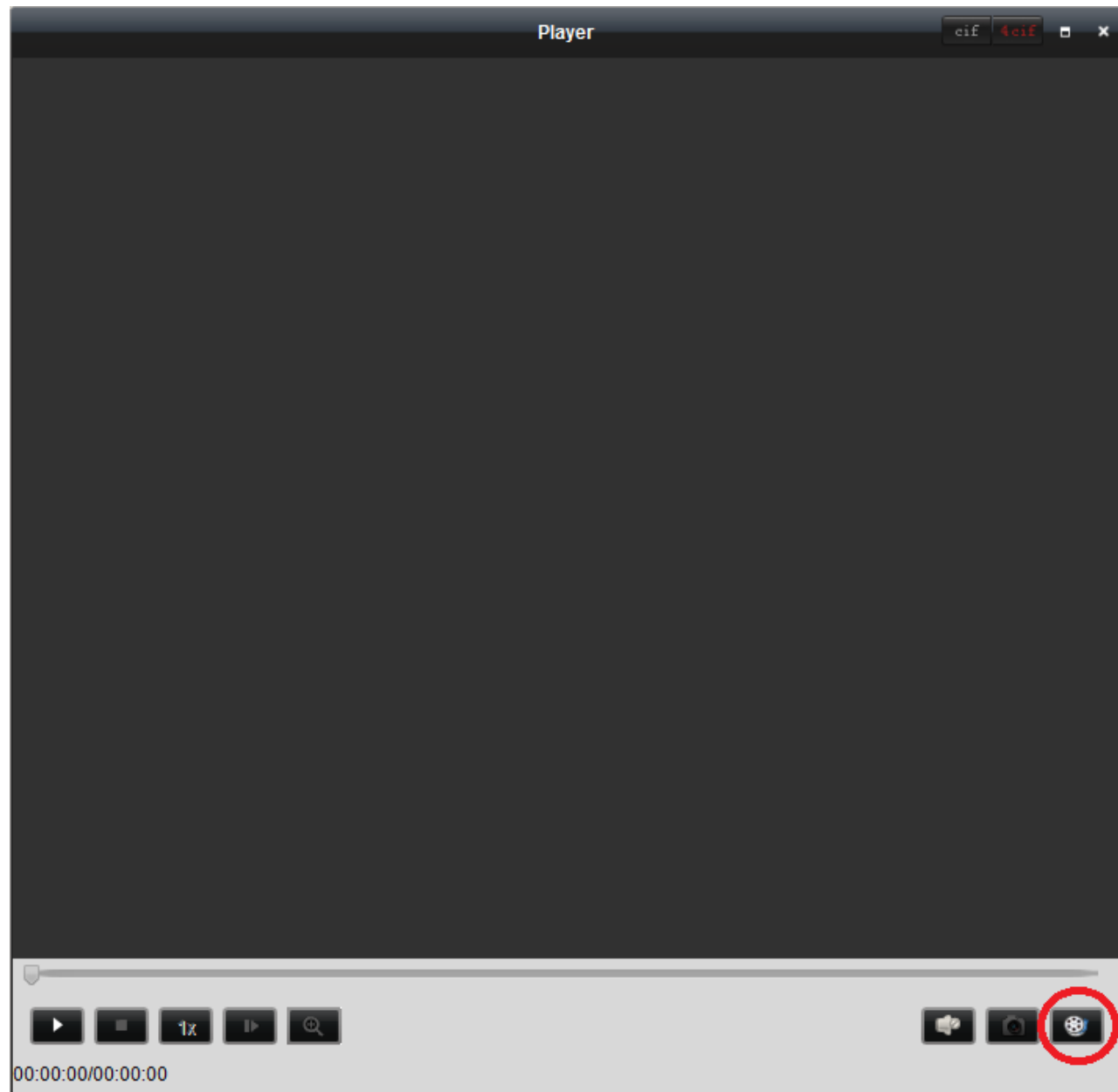


11) Double Left Click on the Player folder

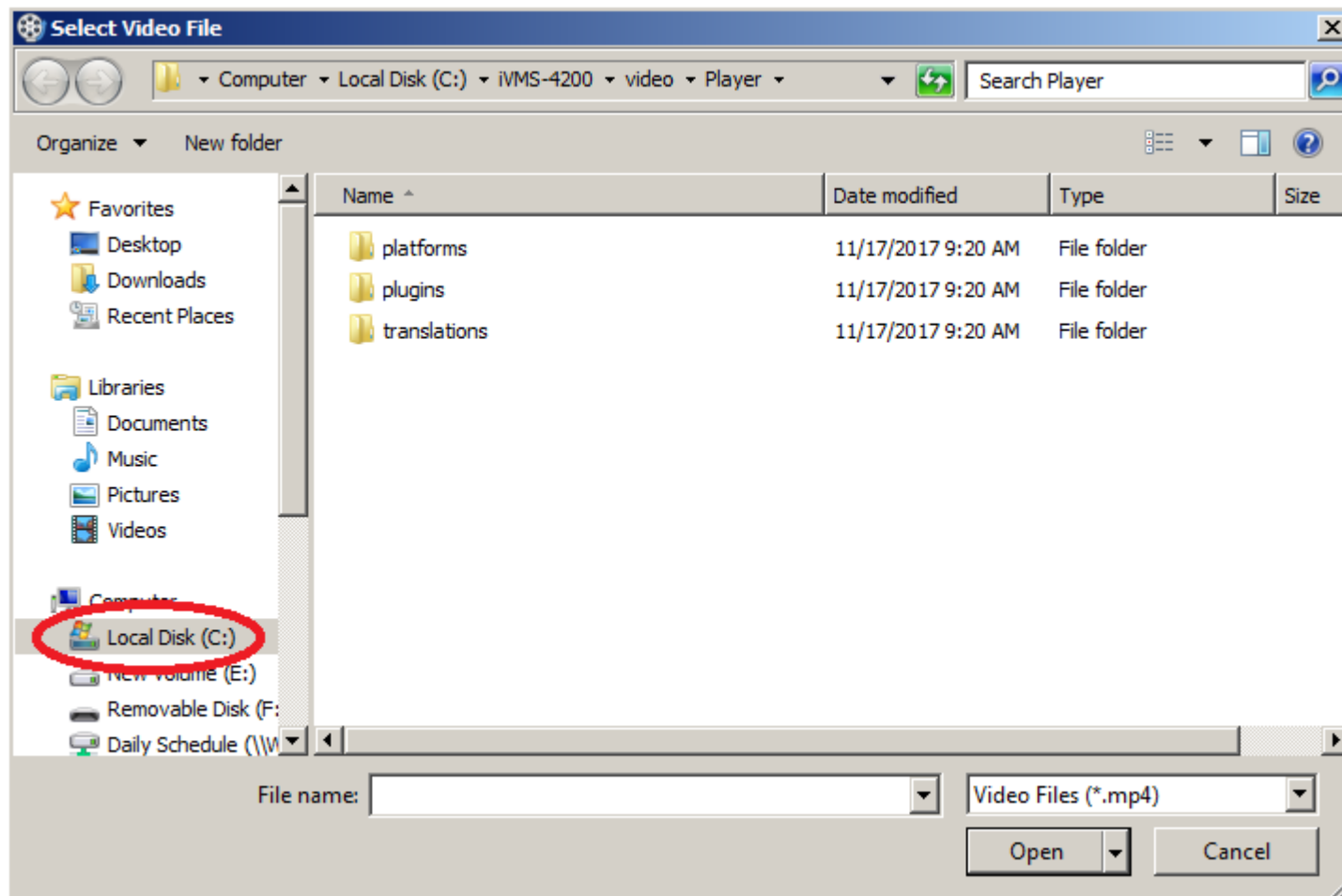


12) Double Left Click on Player

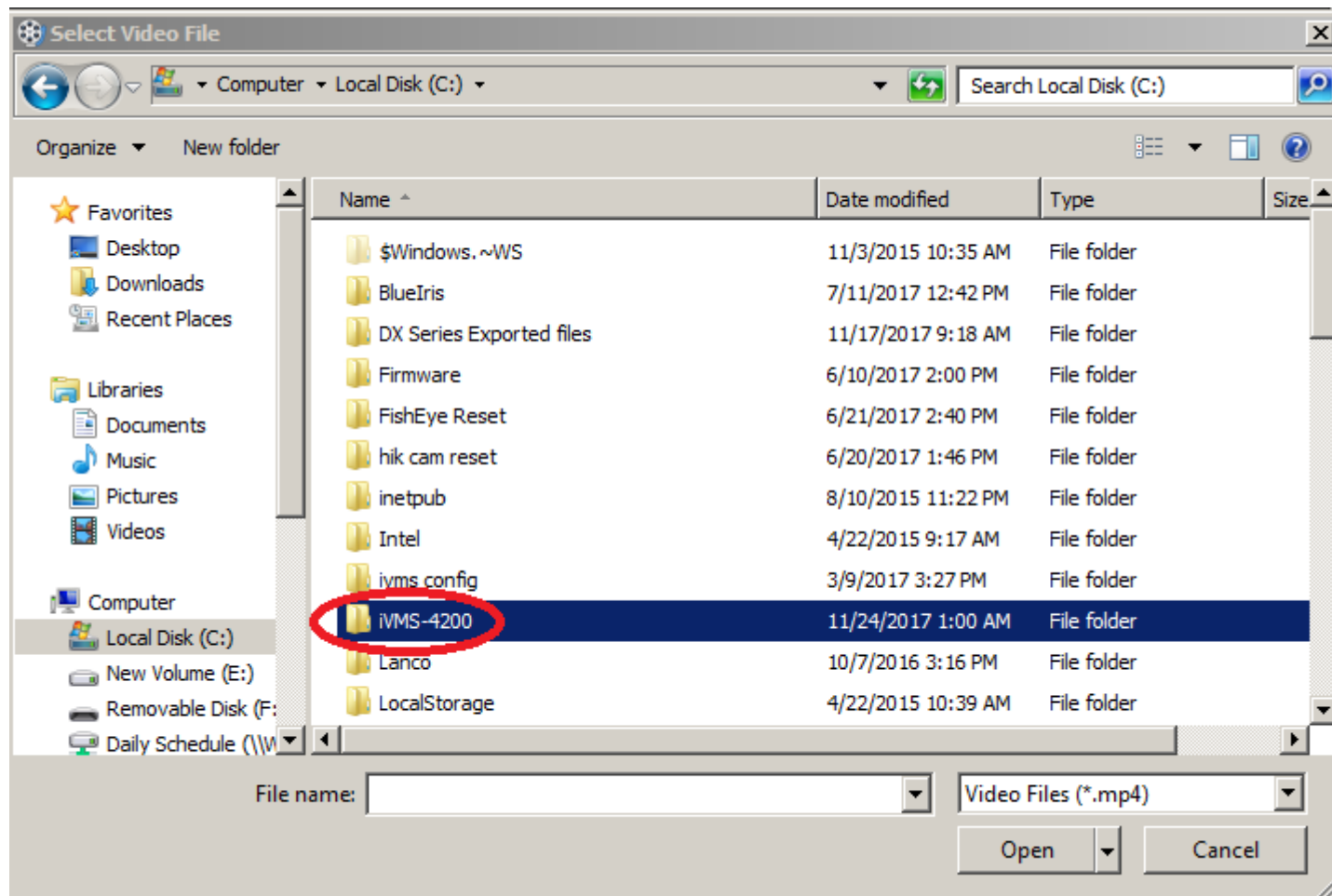




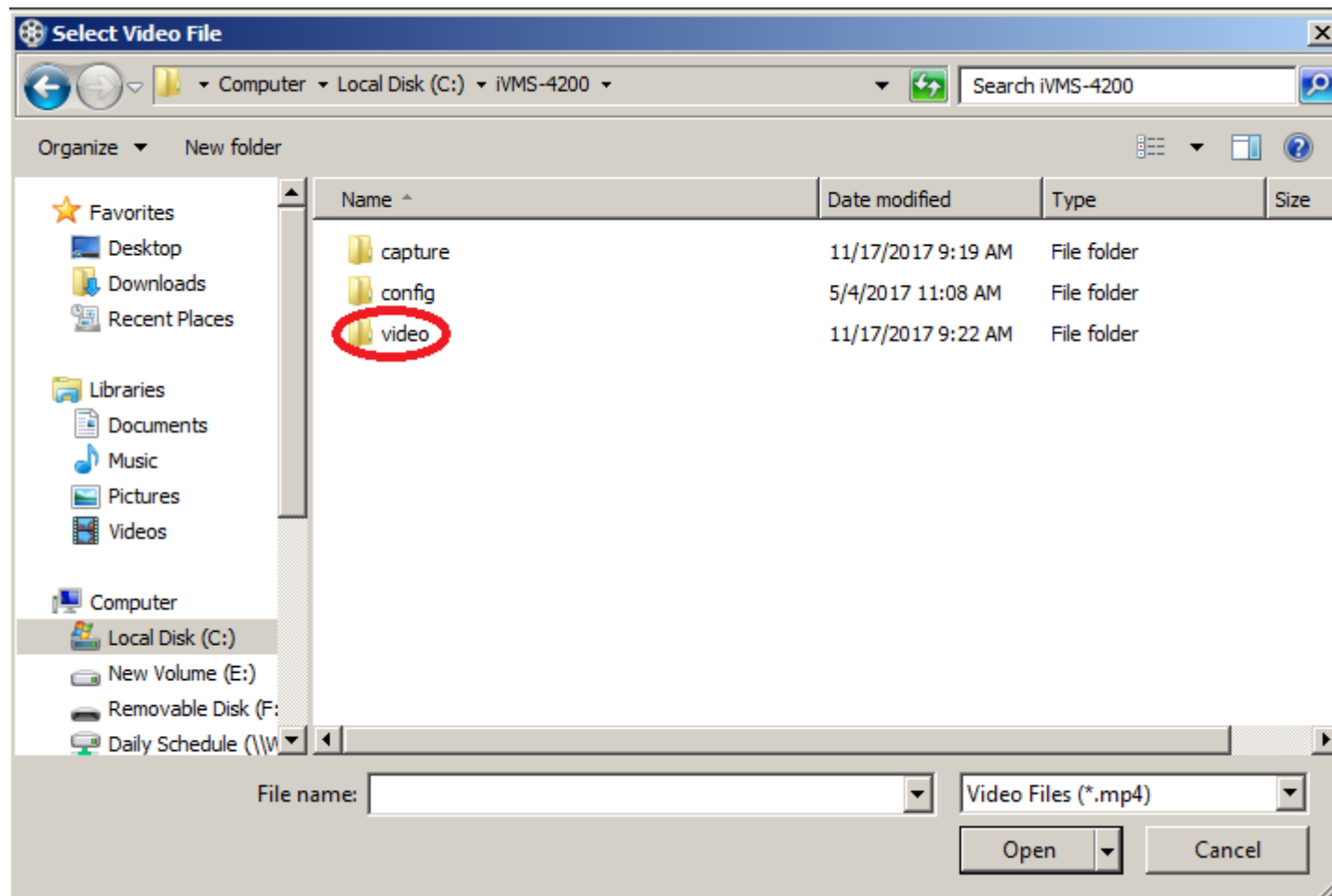
12) Left click on the bottom right most button (circled in red).



13) Left click on your C drive (or if you installed the program on another drive you must click on that one)

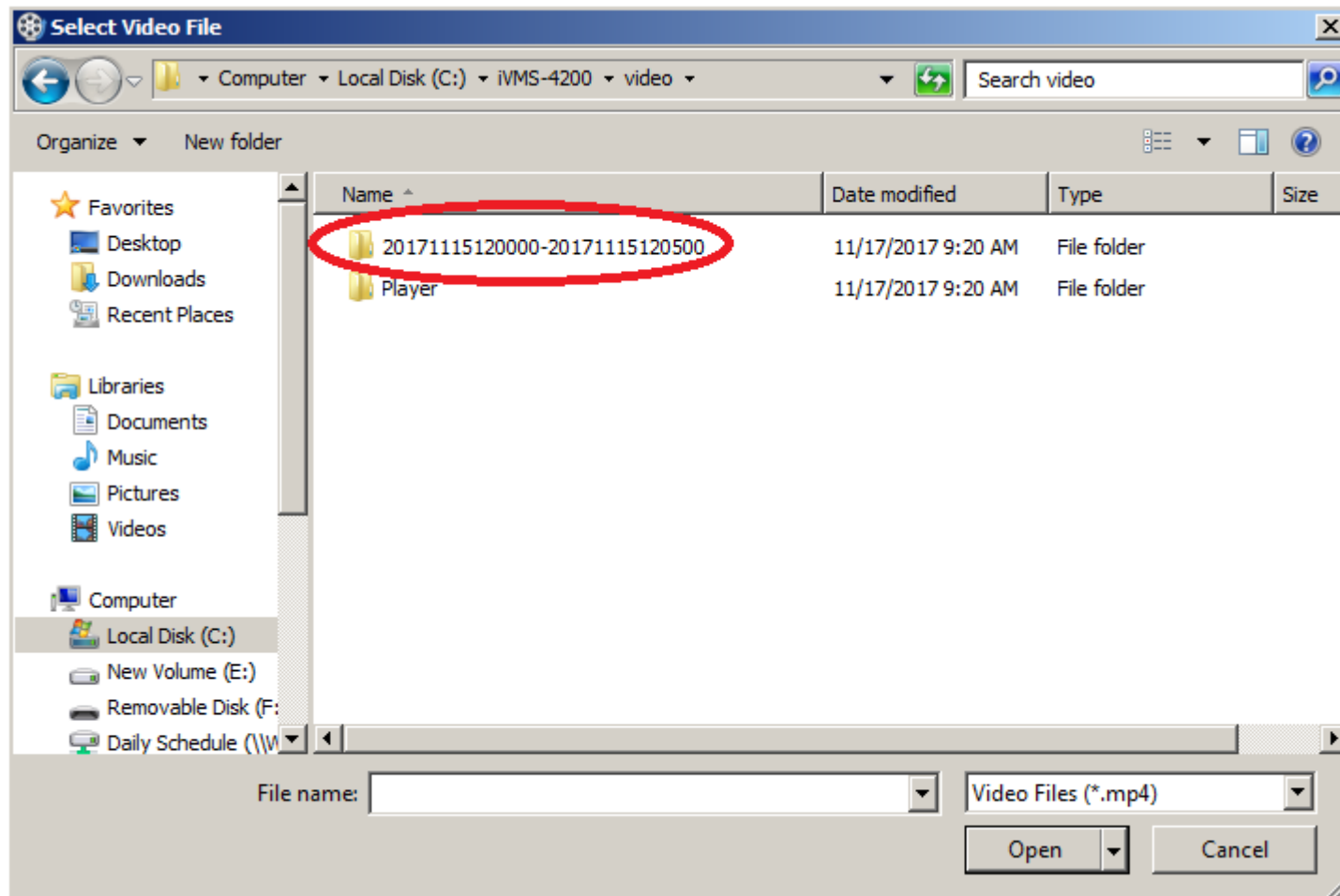


14) Double Left Click on iVMS-4200

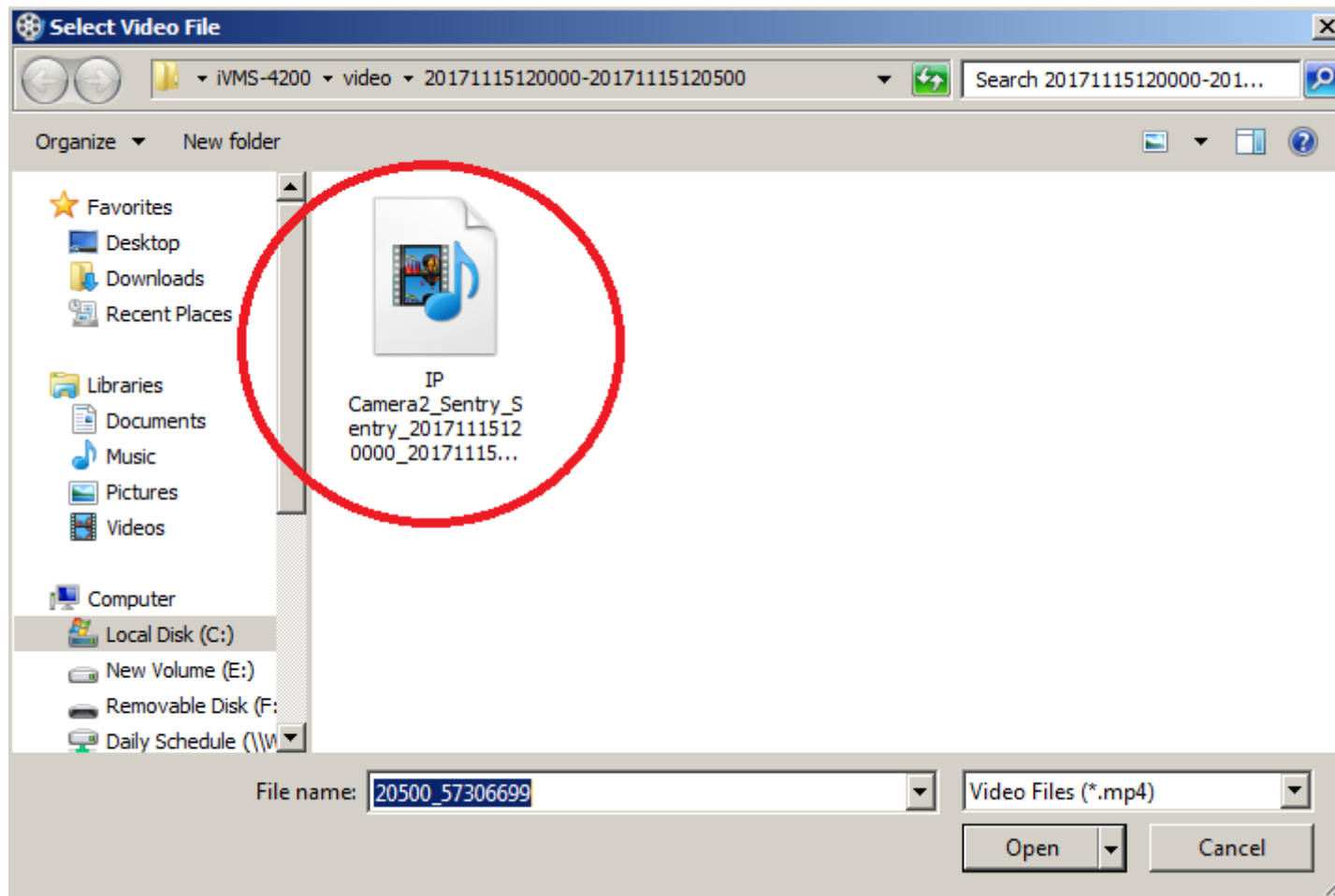


15) Double Left Click on the video folder





16) Double left click on the folder containing your video



17) Double left click on your video file and the player should begin playing it